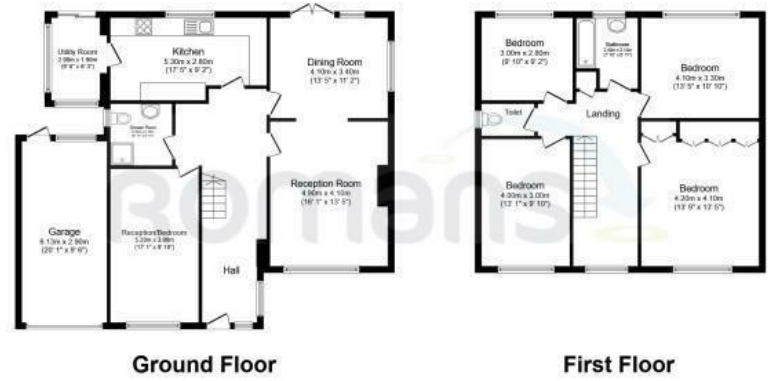




Iberian Way | Camberley | Surrey | GU15 1LU

£3,000 PCM

Waterfords W
Residential Sales & Lettings

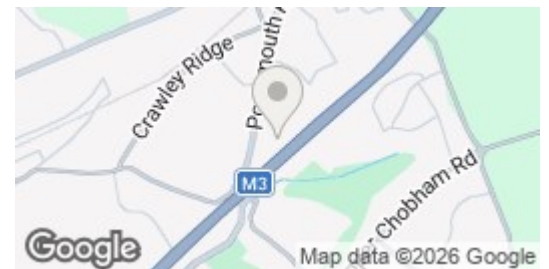


Total floor area 191.0 sq. m. (2,056 sq. ft.) approx

This floor plan is for illustrative purposes only. It is not drawn to scale. Any measurements, floor areas (including any total floor area), openings and orientation are approximate. No details are guaranteed, they cannot be relied upon for any purpose and they do not form part of any agreement. No liability is taken for any error, omission or misstatement. A party must rely upon its own inspection(s). Plan produced for Romans. Powered by www.localagent.com



Energy Efficiency Rating		Current	Potential
Very energy efficient - lower running costs			
(92 plus)	A		
(81-91)	B		
(69-80)	C		
(55-68)	D		
(39-54)	E		
(21-38)	F		
(1-20)	G		
Not energy efficient - higher running costs			
England & Wales		EU Directive 2002/91/EC	



Description

This beautifully refurbished four/five bedroom detached family home is presented to an exceptional standard throughout and is situated in a quiet residential location close to excellent local schools, Camberley town centre and commuter links. Offering spacious and versatile accommodation, the property benefits from multiple reception rooms, modern kitchen with utility room, two bathrooms, enclosed rear garden, garage and driveway parking for several vehicles. Available June 2026 on an unfurnished basis.

Key features

- Four Or Five Bedroom Family Home
- Two Bathrooms
- Garage and Driveway for Several Cars
- Minimum Term 12 Month Let
- EPC D
- Two Or Three Reception Rooms
- Kitchen With Additional Utility Room
- Available June 2026 On An Unfurnished Basis
- Council Tax Band G



39 The Hart Centre
 Fleet
 Hampshire
 GU51 3LA
 01252 623330
 hampshirelettings@waterfords.co.uk
<https://www.waterfords.co.uk/>